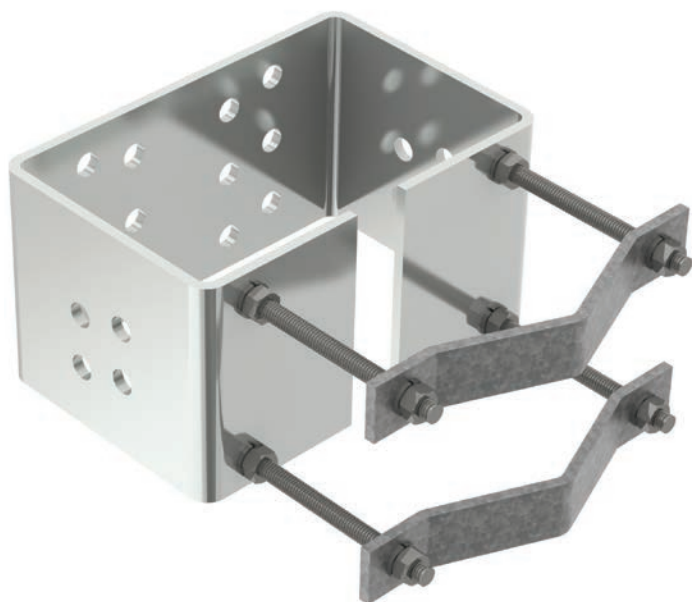


# nVent ERICO Tower Mounted Ground Bar



## CONNECT AND PROTECT

Most equipment on telecommunication towers are grounded by connecting a copper conductor to a ground bar mounted on the tower. The lead length of the conductor is often extensive, which adds resistance to the grounding system. Additionally, traditional ground bars are obtrusive and challenging to get close to other critical tower equipment.



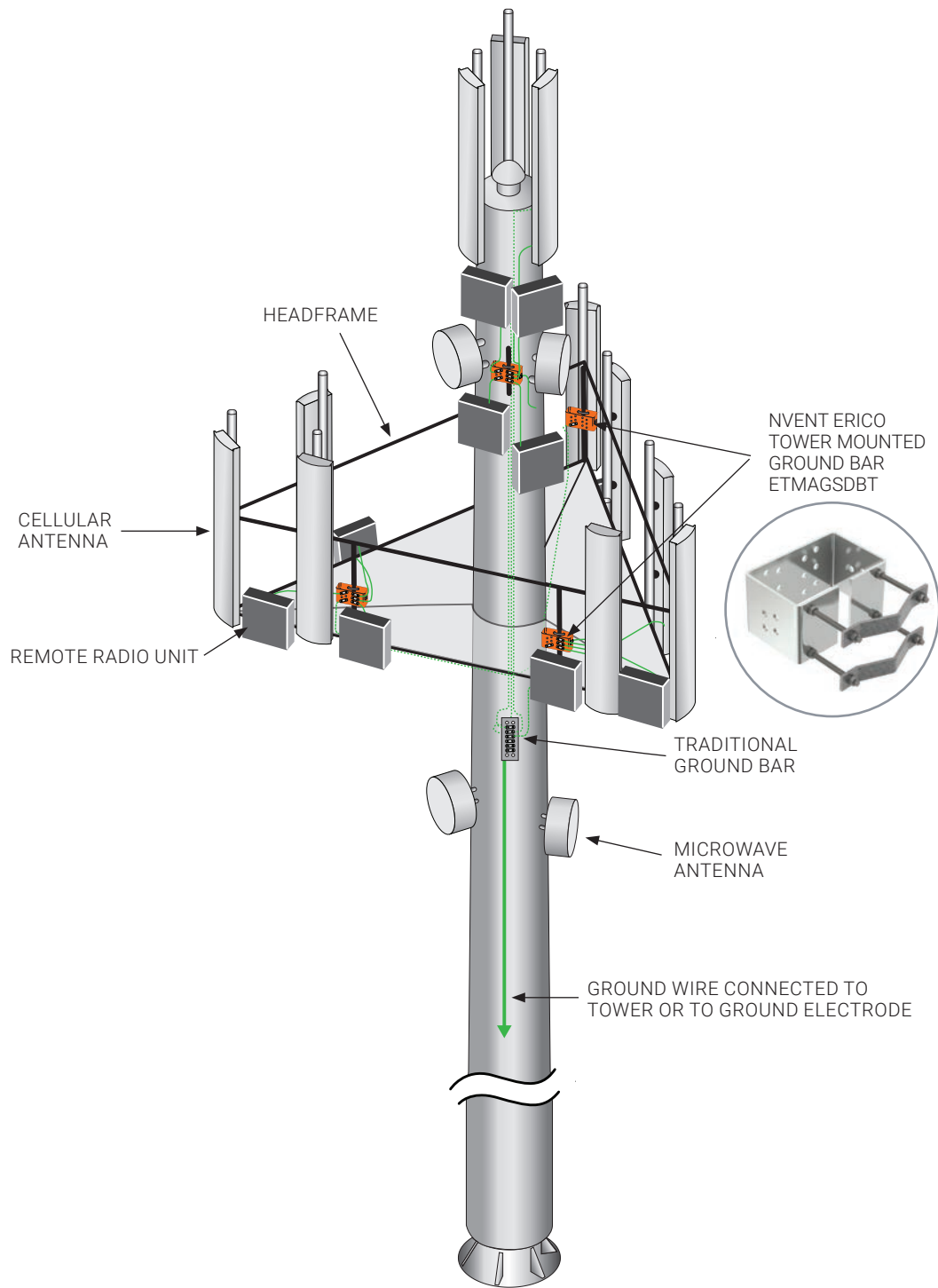
nVent ERICO's Tower Mounted Ground Bar ETMAGSDBT is a compact ground bar with a unique bracket design that is easily installed to the tower head frame creating a direct, low-impedance electrical ground connection to the tower. Due to its compact size and unique direct-mounting feature, ETMAGSDBT can be installed close to remote radio units, small cells, amplifiers, antennas and other equipment, effectively creating the grounding point closer to a denser area of the radio head frame.

ETMAGSDBT can be installed on structural members and mounted directly onto the head frame. Using multiple ETMAGSDBT on a tower can reduce the amount of grounding wire required and increase the effectiveness of the grounding system.

#### Product benefits include:

- Compact design fits in tight and confined locations
- Easily attaches to steel mounting on tower headframe
- Quick installation time
- Reduction in amount of grounding conductors
- 10 double-hole lug attachment points including 4 side options
- Replaces traditional ground bars
- Tinned copper to reduce dissimilar metal issues
- Box design is less obtrusive than traditional ground bars
- Galvanized steel brackets

Part Number	Material	Pole/Pipe Range	Hole Spacing	Hole Pairs	Wire Size
ETMAGSDBT	Tinned Copper	1.5"- 3.75"	1"	10	2 AWG



nVent ERICO has the experts and experience to select the ideal grounding and bonding solution for your application from the ground, up. [Click here to learn more.](#)



Our powerful portfolio of brands:

**CADDY ERICO HOFFMAN RAYCHEM SCHROFF TRACER**