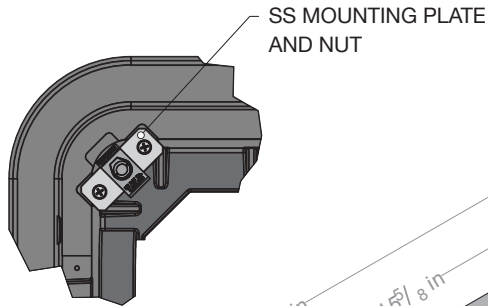
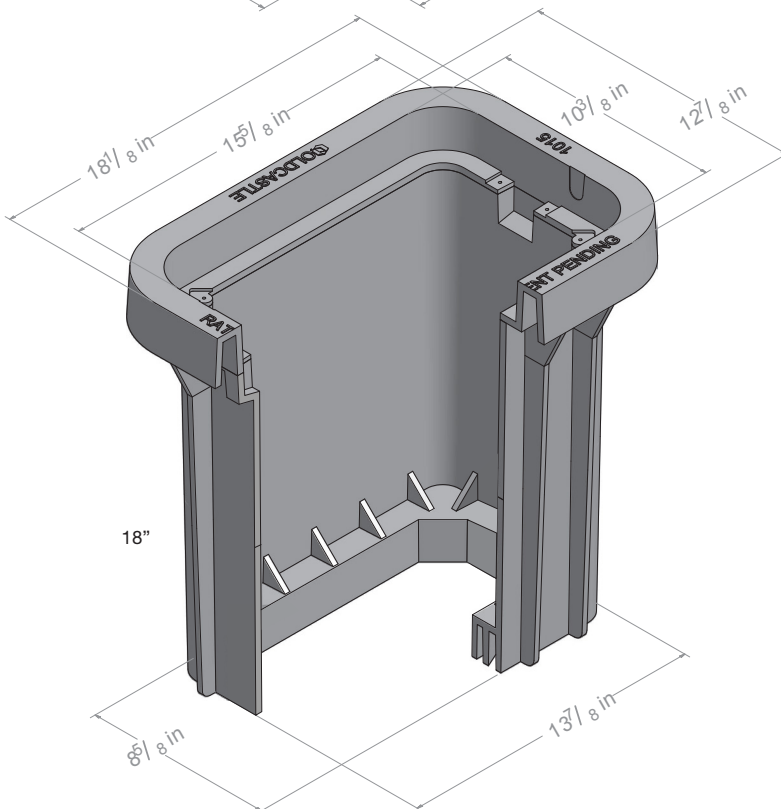
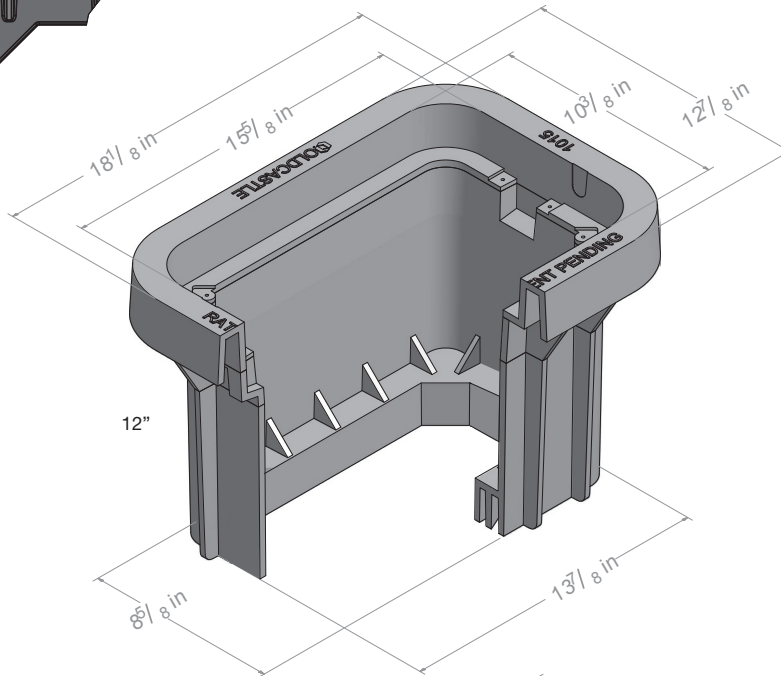


# 1015



Bolt Down  
Detail



## 12" BODY:

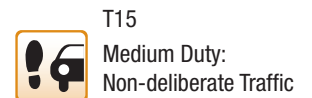
Material: Polyolefin Blend  
Model: 10" x 15"  
Depth: 12"  
Weight: 10.8 lbs  
Wall Type: Straight  
Mouseholes: 0  
Performance: ANSI/SCTE-77, Tier 15, WUC 3.6

## 18" BODY:

Material: Polyolefin Blend  
Model: 10" x 15"  
Depth: 18"  
Weight: 16 lbs  
Wall Type: Straight  
Mouseholes: 0  
Performance: ANSI/SCTE-77, Tier 15, WUC 3.6

\*Cover comes standard with permanent markings for manufacturer, load rating, model size and manufacturing location.

Contact your Oldcastle Enclosure Solutions Distribution Center for specific information and additional options.



For use in non-vehicular traffic situations only.

Actual load rating is determined by the box and cover combination. Weights and dimensions may vary slightly.

Rev 8/2016 ©2016 Oldcastle, Inc.

1015

**Options:**

**Available Polymer Concrete Covers:**

Flush Solid Cover

**Available Synertech Covers:**

Flush Solid Cover

**Locking Options for All Covers:**

Hex Head Bolt Down

Penta Head Bolt Down

Vandal Resistant Bolt Down

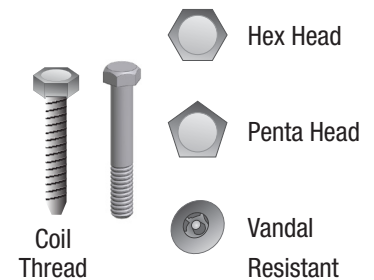
Hex Head Coil Thread Bolt

**Add on Options:**

EMS Marker



Polymer  
Flush Solid



**Raw Material  
Specifications:**

**Enclosure Body**

Material Property	Test Method	Typical Value <sup>1</sup>
Density	ASTM D1505	0.960 to 0.980, g/cm <sup>3</sup>
Tensile Strength, at break	ASTM D638	5,500 to 7,700 psi
Flexural Modulus	ASTM D790	400,000 to 500,000 psi
Impact Resistance	ASTM D5420	60.0 in-lb

**Enclosure Covers**

Material Property	Test Method	Typical Value <sup>1</sup>
Compressive Strength	ASTM C170	11,000 to 14,000 psi
Flexural strength	ASTM D740	3,200 to 3,600 psi
Density	ASTM C128	143 to 150 lb/ft <sup>3</sup>
Water absorption	ASTM D570	0.24 to 0.50 %
Fire resistance mm/min	ASTM D635	Self-extinguishing
Scaling resistance of concrete surfaces exposed to deicing chemicals	ASTM D543	No significant change

<sup>1</sup>The values listed for physical property measurements are nominal values only.

Certain physical property measurements are subject to variations consistent with the test methods and are within a generally accepted range for such values.

**Product Load  
Rating:**



**Medium Duty : Non-deliberate Traffic**

For use in non-vehicular traffic situations only.

**Note:**

Actual load rating is determined by the box and cover combination. Weights and dimensions may vary slightly

All information contained on this sheet is current at the time of printing.

Oldcastle Precast, Inc. reserves the right to discontinue or update product information without notice.



Rev 8/2016 ©2016 Oldcastle, Inc.