

1015 MSBC

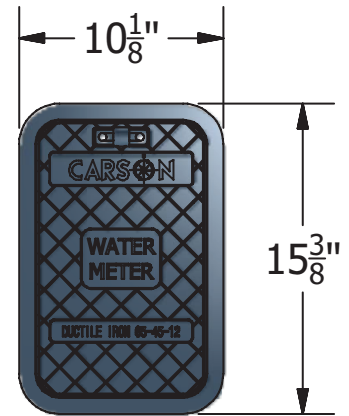
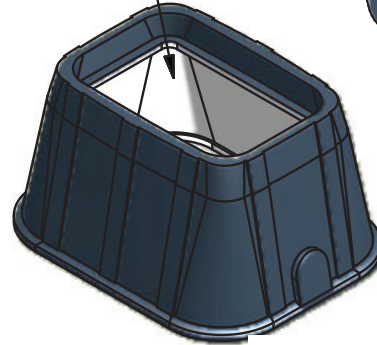
CARSON® Heavywall

COVER

Style:	Flush
Material:	Ductile Iron
Weight:	22 lbs
Options:	Logos and Special Markings

Cover comes standard with permanent markings for manufacturer, load rating, model size and manufacturing location.

White Interior



BODY

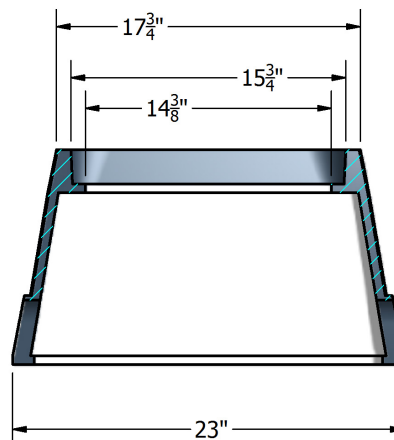
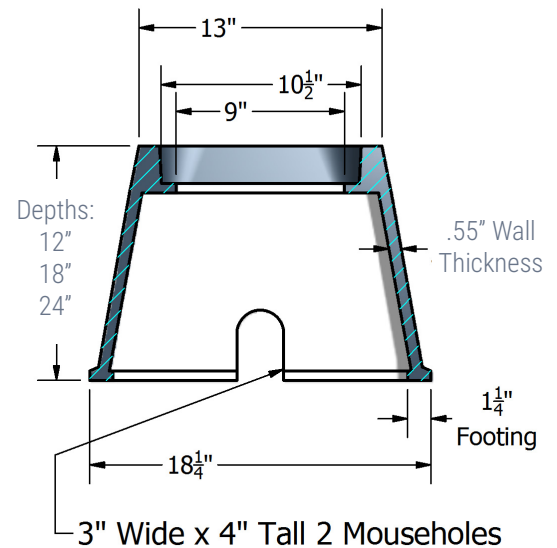
Material:	Polyethylene Blend
Model:	13" x 17"
Weight:	12" Depth: 13 lbs 18" Depth: 20 lbs 24" Depth: 27 lbs
Mouseholes:	0-2

LOAD RATING / NOTES



MEDIUM DUTY
ANSI/SCTE TIER 15

For use in non-vehicular traffic situations only.
Weights and dimensions may vary slightly.
Actual load rating is determined by the box
and cover combination.



1015 MSBC

CARSON® Heavywall

COVER OPTIONS

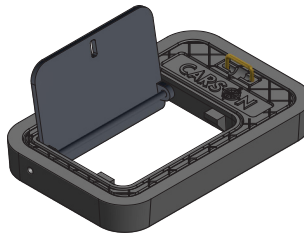
HDPE, Flush Solid
HDPE, Flush with Plastic Reader Door
HDPE, Flush with Cast Iron Reader Door
Heavy Duty Plastic, Flush Solid
Polymer, Flush Solid
Polymer, Flush with Cast Iron Reader Door
Ductile Iron, Flush Solid
Ductile Iron, Flush with Cast Iron Reader Door



Flush Solid



AMR Recess




Reader Door
Detail



Undermount
Detail

ADD ON OPTIONS

Touch Read Hole
ERT Holder (HDPE and Polymer Covers)

 **WARNING:** Cancer - www.P65Warnings.ca.gov

All information contained on this sheet is current at the time of publication.
Oldcastle reserves the right to discontinue or update product information without notice.

Revision 11/30/18
© 2018 Oldcastle Infrastructure